

Investor Intelligence Report Chubb Ltd

"Voice of the Shareholder"

1Q 2024 As of February 26th, 2024

Brendan Wood International
First Intelligence

Notice To Reader

This report contains confidential information which is the exclusive property of Brendan Wood International. Such information shall not be copied, excerpted, disclosed to others, or used for any purpose other than that for which it is expressly given, without the prior written permission of Brendan Wood International.

We wish to emphasize that all reports, evaluations and assessments contained herein, represent Brendan Wood International's subjective judgment and opinions, based on our years of experience and on information obtained by us in the course of our research. Much of the factual information contained in the reports has been obtained by us from third parties on whose responses we have relied in good faith, independent verification by Brendan Wood International being, under the circumstances, impossible. While we believe that you will find our reports to be an invaluable tool in formulating your own strategies and judgments, the foregoing should be borne in mind. Under no circumstances should any ratings or evaluations of individuals' performances in these reports be considered as a sufficient basis for making decisions concerning the careers of individuals, including such matters as promotions, compensation arrangements, terminations, etc.

This report is not meant as investment advice and should not be interpreted as advising on the value of a company's securities, the advisability of investing in, purchasing or selling any company's securities or any other conclusion relating to investment/divestiture of a company's securities. Finally, this report is not intended as an offer or solicitation for the purchase or sale of any of company's securities.

Brendan Wood & Partners

The Brendan Wood Shareholder Confidence Panel

BWI Panel
Institutional
&
Private Wealth Investors

Secondary Markets
Professionals
Research, Sales & Trading

GLOBAL PANEL
 2000+ Debriefs with Decision
 Makers
 >\$56 Trillion in Assets
 70% Sector Specialists
 30% Generalists
 Average 9 Yrs Professional
 Experience, 25% more than 15
 Years

+/- 600 Professionals, including...
 +/- 400 TopGuns

GLOBAL RESOURCES PANEL
 350+ Debriefs with Decision
 Makers
 >\$15 Trillion in Assets
 80% Sector Specialists
 20% Generalists
 Average 11 Yrs Professional
 Experience, 35% more than 15
 Years

+/- 100 Professionals, including...
 +/- 100 TopGuns

Geographic Breakdown of the BWI Panel 2023:

US	42%
Canada	21%
Europe/Middle East/Africa	32%
Pacific Rim	4%
Latin America	1%+

Global Resources Panel:

35%
34%
27%
3%
1%+

WHAT DO BRENDAN WOOD COMPANY SCORES MEAN?

METHODOLOGY

The core mission of BWI performance and quality metrics is to illustrate and explain the emerging investor “commitment to own” particular stocks.

Eleven critical performance metrics are used to determine the relative strength of investor commitment to a company as an investment target. To help investors rate companies in a sector on a relative basis “one metric at a time”, a visual technique is used. For example, the visual tool shows investors a consensus vertical hierarchy representing how each investment target company in a sector is rated by investors against a criterion such as “Quality of Strategy” ... AS AN INFLUENCE ON THE INVESTOR COMMITMENT TO OWN THE NAME. The investor is then asked to adjust the consensus rating hierarchy to match their own particular view of how each company scores against the “Quality of Strategy” criterion. They may agree or disagree with the consensus. The investor then makes their personal adjustments which are added to our cumulative data instantly. To make this task fast and accurate the visual scoring hierarchy is broken down into top decile, four quartiles and a bottom decile, therefore six potential levels of performance against each investment selection criterion. The quartile display is instantly recognizable by investors as indicating both absolute and relative bases of the influence of a company’s level of competitive performance against a critical investment selection criterion.

The above methodology forces the (dependent variable) absolute benchmark of “commitment to own” on each quality of a corporate investment target.

WHY A COMPANY SCORE MAY BE FIRST IN ITS SECTOR BUT RATE IN THE SECOND QUARTILE?

This means that the sector itself (all companies included) ranks in the second quartile or below of investor selection attractiveness against a particular criterion of investability.

ADVANTAGE OF BRENDAN WOOD INTERNATIONAL METHODOLOGY?

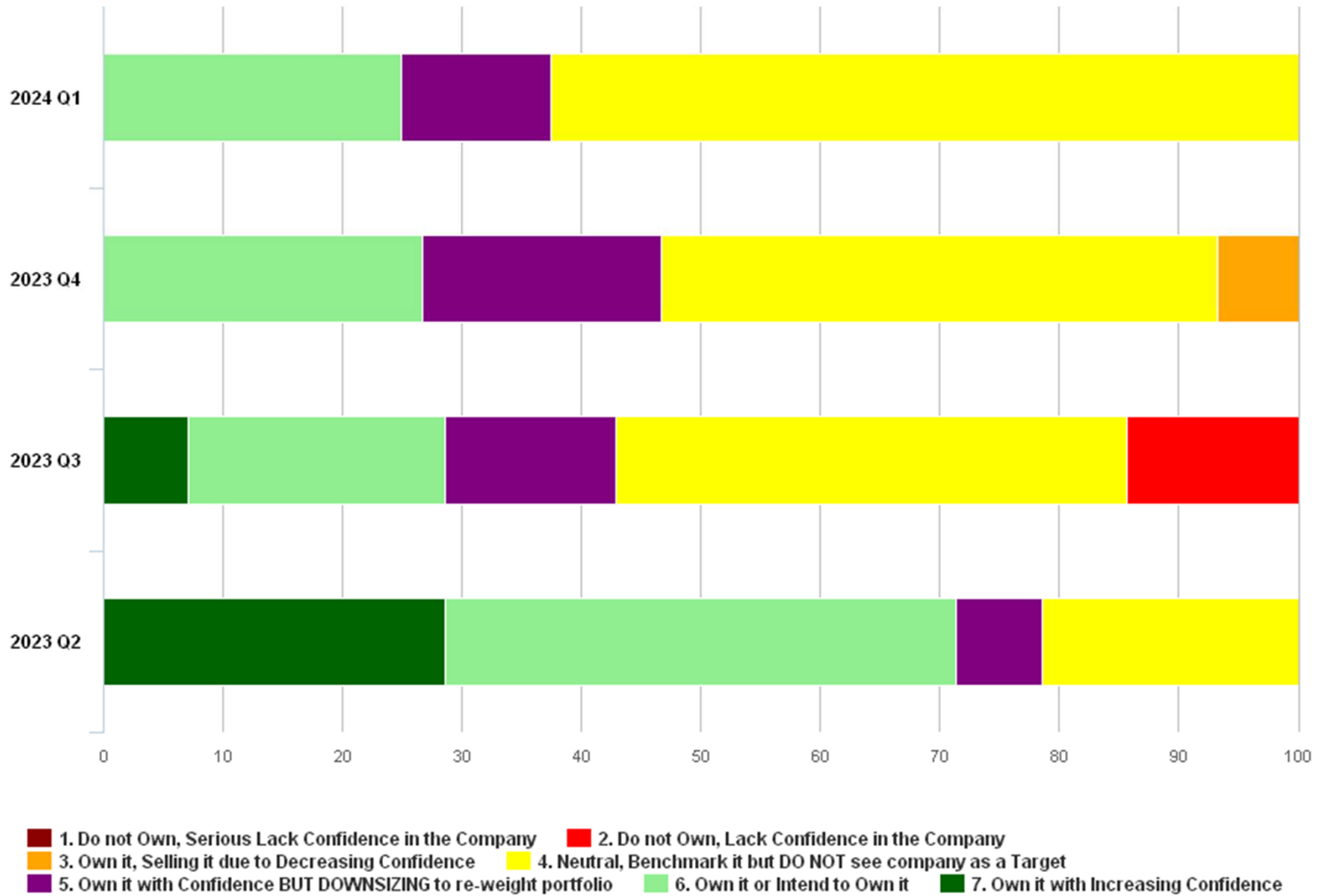
This process identifies the emerging competitiveness of individual sectors, sub-sectors and most importantly of companies as investment targets on both an absolute and relative ‘best in sector’ basis against investors’ selection criteria for the year ahead. Such calibrated data allows BW partners to help corporate management to accurately analyze their company’s attractiveness as a target for the year ahead as an individual story and relative to its comparables and sector. The isolation of performance against individual metrics enables management to identify and address the key metrics which drive the “commitment to own” their particular stock.

APPARENT CONDICTION BETWEEN QUARTERLY RESULTS AND ROLLING YEAR RESULTS?

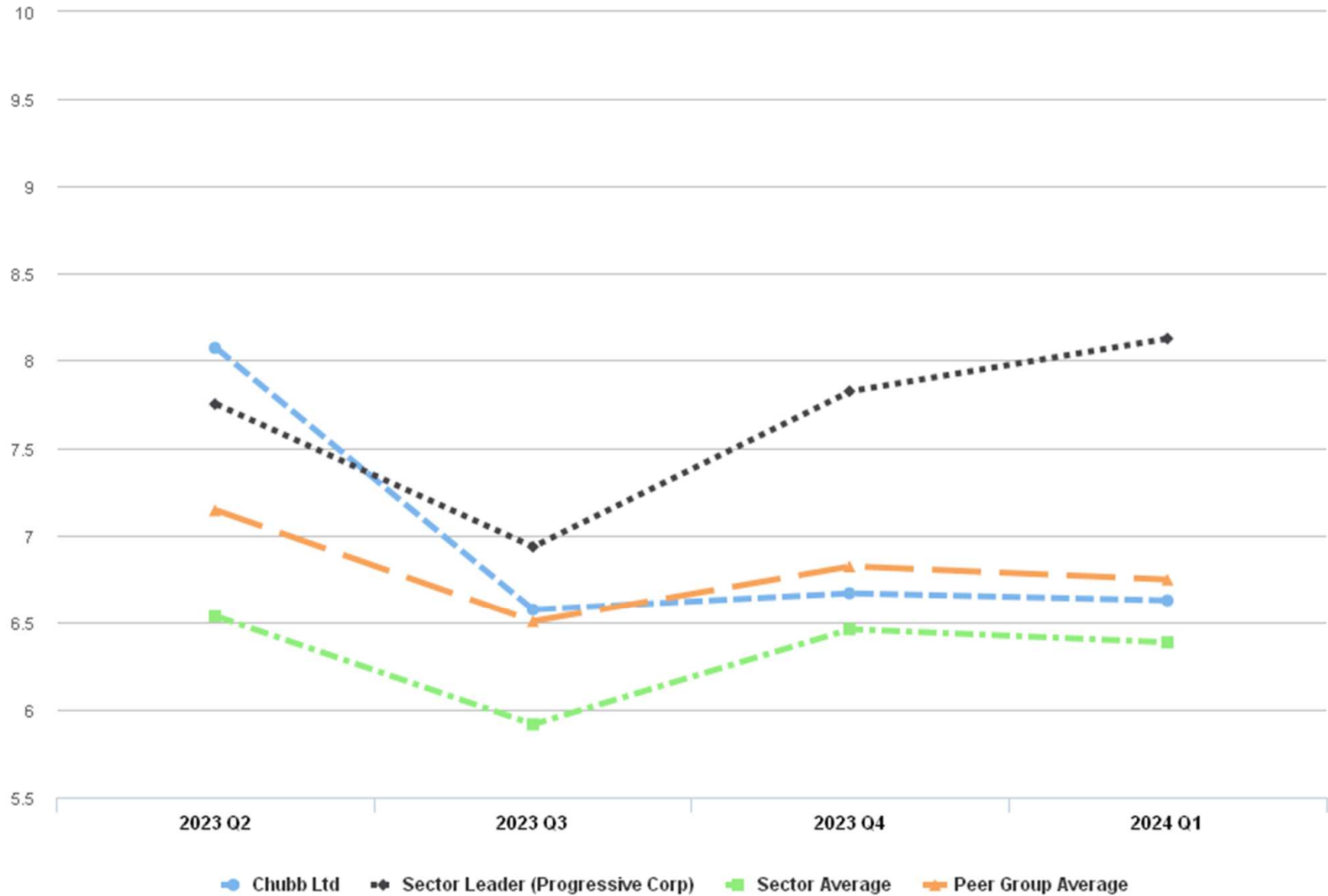
Quarterly results = the results in the quarter. Rolling years results = the results for a full year of data.

What is Your Commitment to Own This Stock in The Year Ahead?

Chubb Ltd



What is Your Commitment to Own This Stock in The Year Ahead?



Shareholder Confidence Metrics

Chubb Ltd's Performance Vs Chubb Ltd Peer Group

Chubb Ltd Peer Group

Allstate Corp.

American International Group

Arthur J. Gallagher & Co

Chubb Ltd

Hartford Financial Services Group Inc.

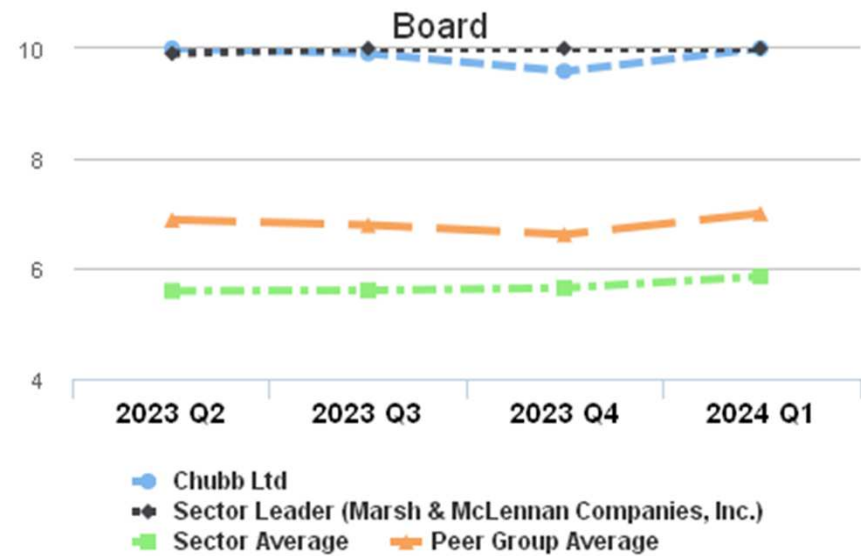
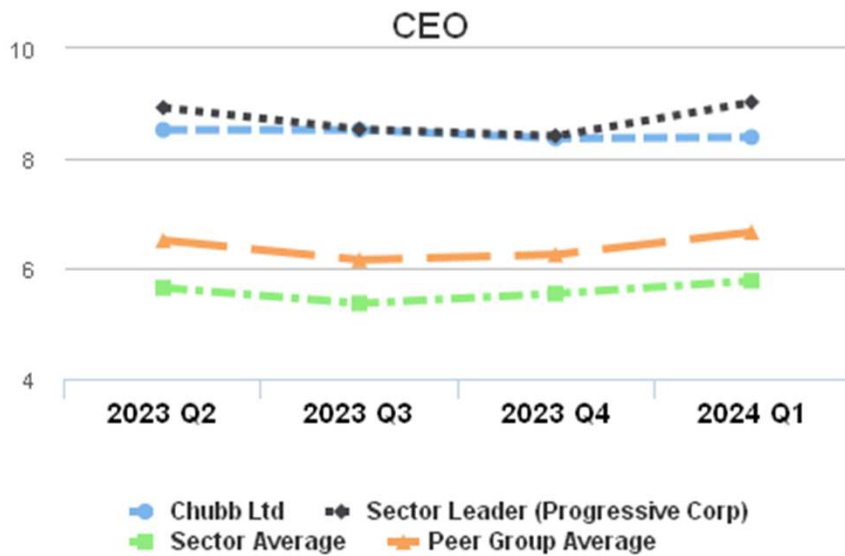
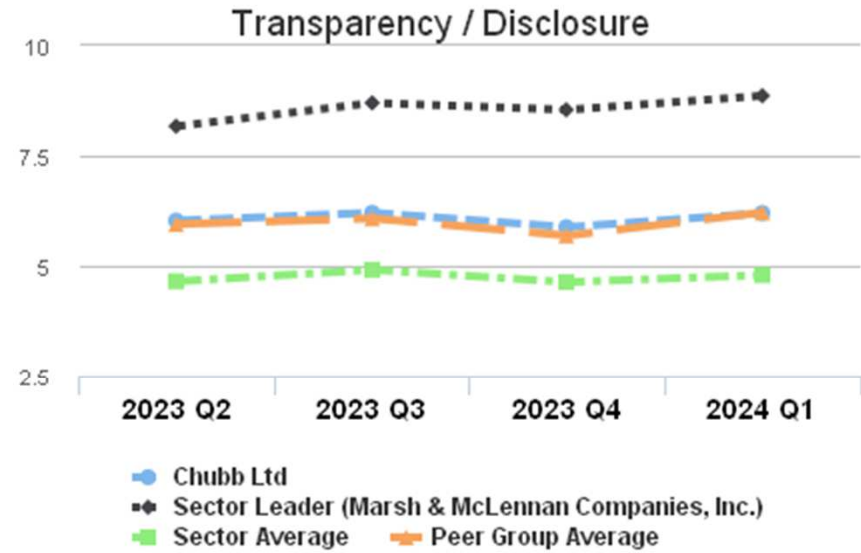
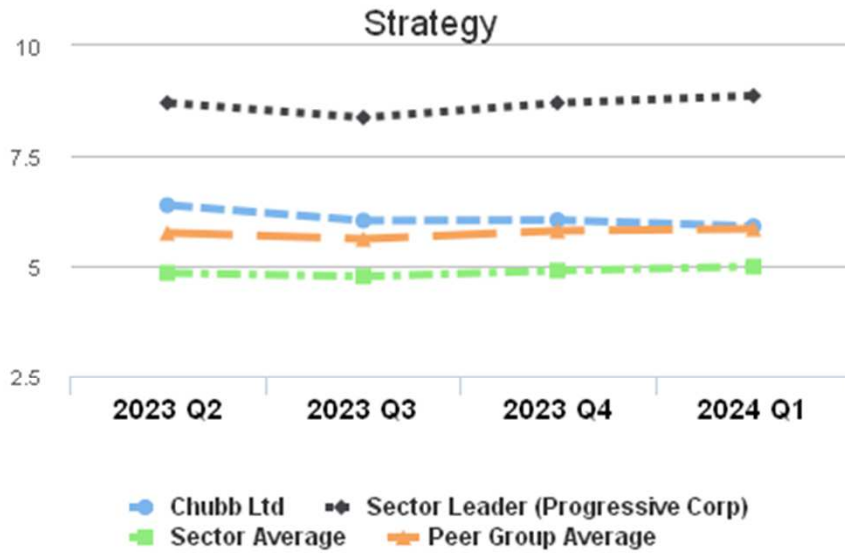
Marsh & McLennan Companies, Inc.

Progressive Corp

Travelers Companies Inc

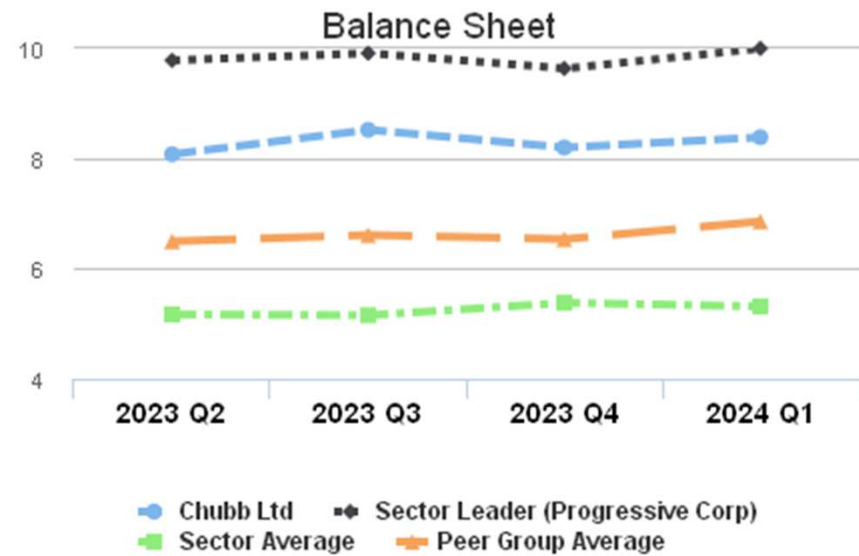
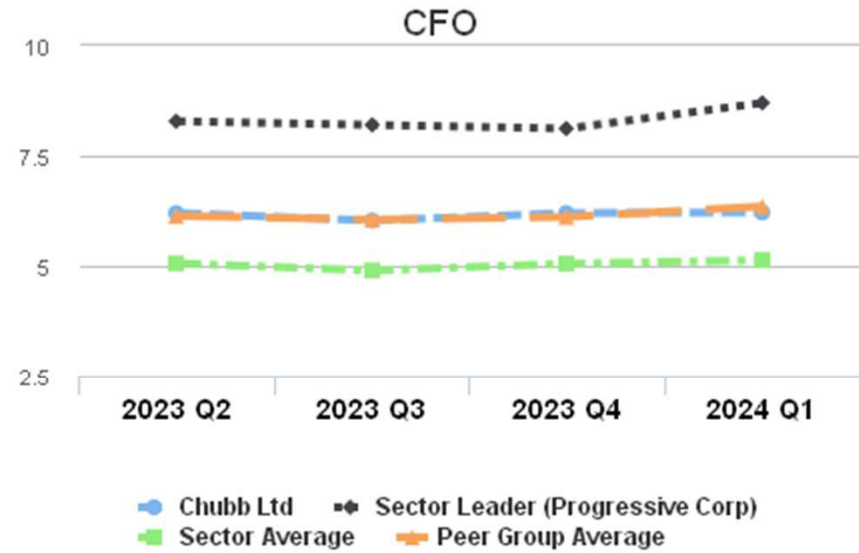
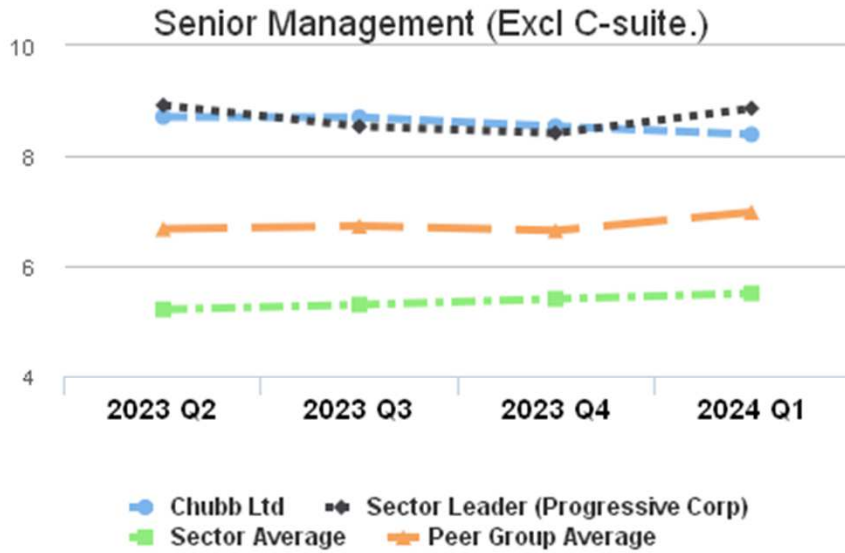
Shareholder Confidence Metrics Forecast for the Year Ahead

Quarter over Quarter Results



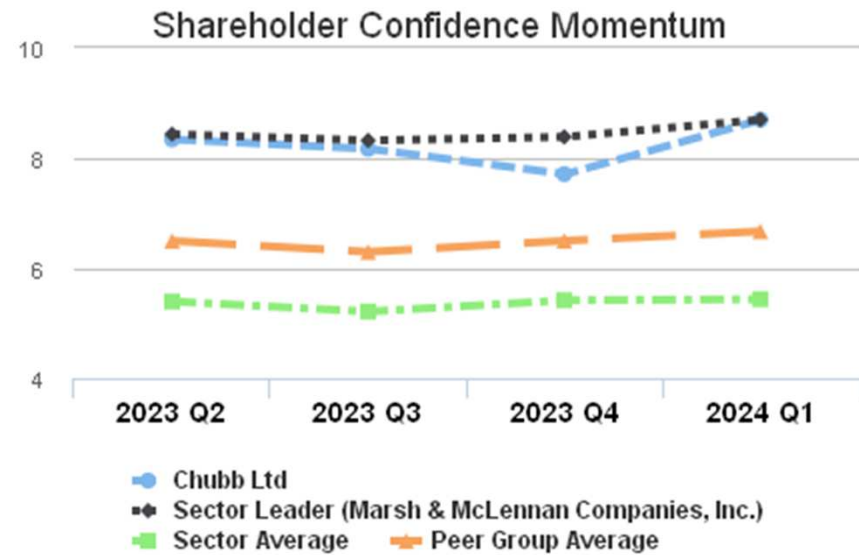
Shareholder Confidence Metrics Forecast for the Year Ahead

Quarter over Quarter Results



Shareholder Confidence Metrics Forecast for the Year Ahead

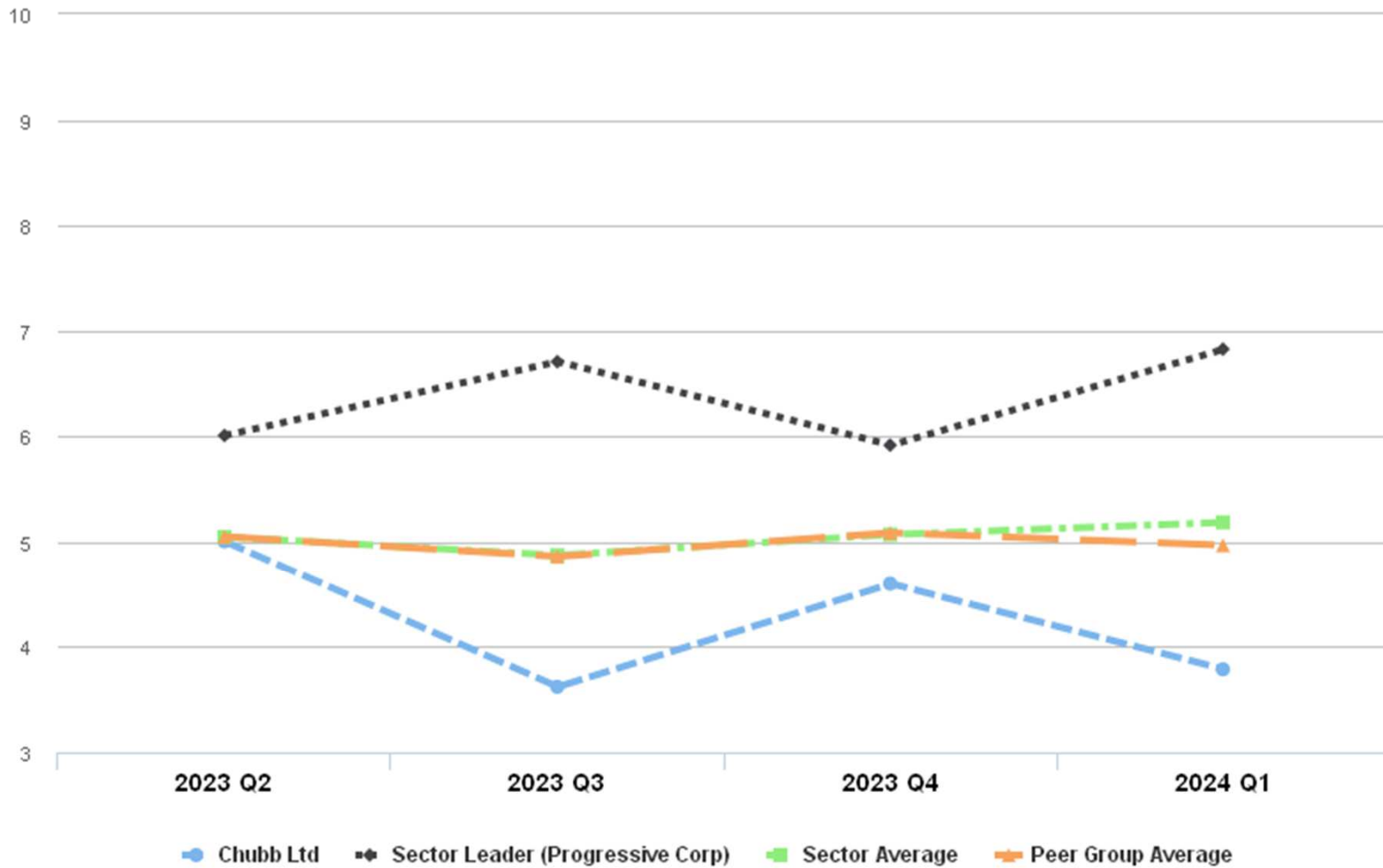
Quarter over Quarter Results



Shareholder Confidence Metrics Forecast for the Year Ahead

Quarter over Quarter Results

Price Appreciation Potential



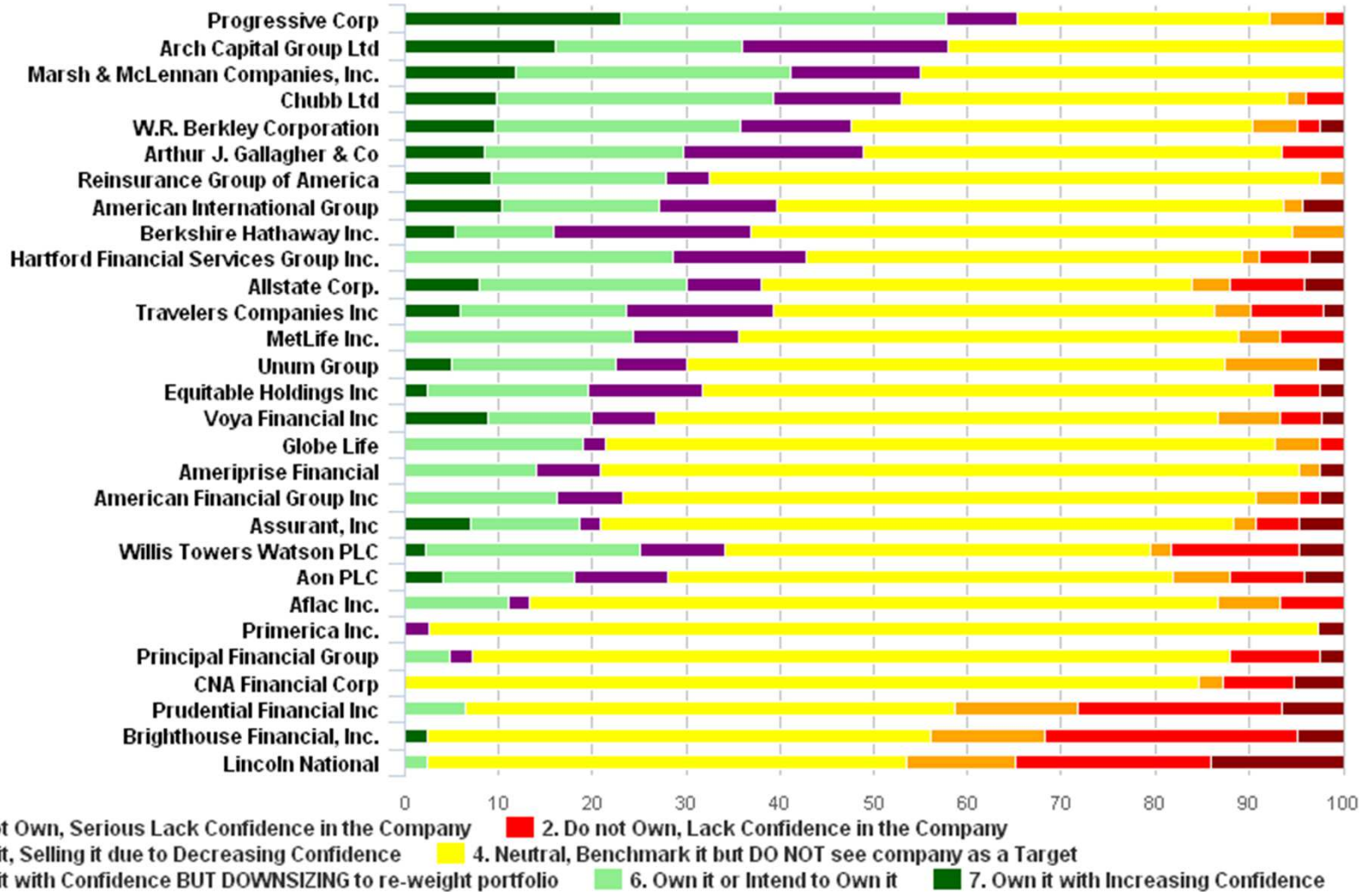
Rolling Year Data*

*Rolling Year Data = Accumulation of the rolling 12 month intelligence from the
BWI Shareholder Confidence Panel

What is Your Commitment to Own This Stock in The Year Ahead?

Rolling Year Data

Buyers/Sellers by Sector



Shareholder Confidence Competitive Index

Rolling Year Data

Global Investors - Investment Quality Index

